

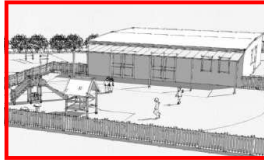
# NEWSLETTER

## Inside this issue:

|                            |       |
|----------------------------|-------|
| Project News               | 2 & 3 |
| Training /<br>CPD Seminars | 4     |
| Around the<br>Office       | 4     |
| Social Events              | 5     |

Welcome ... to the January/February 2011 edition of Wilby & Burnett's Newsletter—a review of the latest news from Provident House.

## PROJECT NEWS



Tiddlywinks Nursery

- St Paul's CE Primary School, Walworth
- Mercer & Hughes, Great Dunmow
- St James Hatcham CE Primary School, New Cross
- Tiddlywinks Nursery, Bishop William Ward CE Primary

## TRAINING/CPD SEMINARS AROUND THE OFFICE



- Lunchtime CPD Seminars
- RIBA CPD Seminars
- Cambridge Forum for the Construction Industry
- Wilby & Burnett News

## SOCIAL EVENTS



- Staff Christmas Lunch at John Barleycorn in Duxford on Friday 17<sup>th</sup> December 2010

## WILBY & BURNETT LLP

*Project Management,  
Architecture & Surveying*

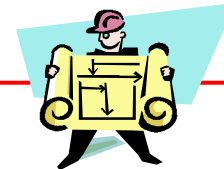
Provident House  
123 Ashdon Road  
Saffron Walden  
Essex  
CB10 2AJ

Telephone: 01799 513621  
Fax: 01799 514010  
E-mail: [info@wilbyburnett.co.uk](mailto:info@wilbyburnett.co.uk)  
Website: [www.wilbyburnett.co.uk](http://www.wilbyburnett.co.uk)

## CONTACT THE EDITORS . . .

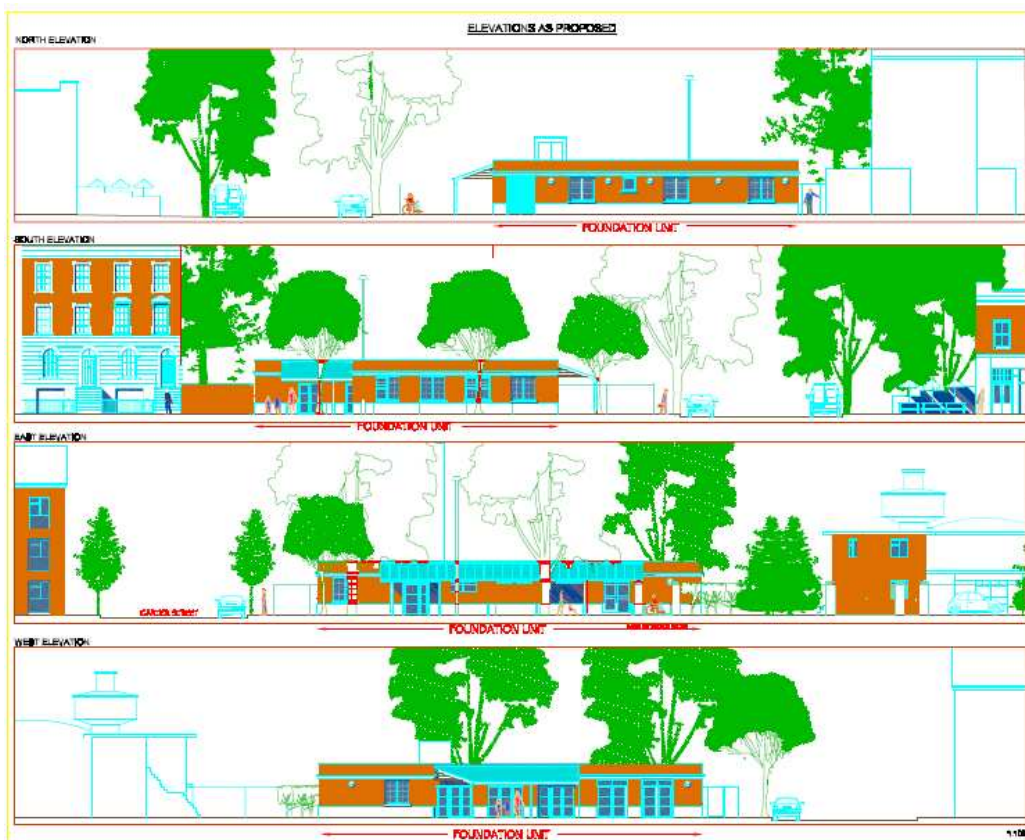
We would be delighted to receive your feedback and any relevant news for incorporation within the next issue. Please e-mail Terry or Jenny by the end of the month—  
[terry@wilbyburnett.co.uk](mailto:terry@wilbyburnett.co.uk) or [jenny@wilbyburnett.co.uk](mailto:jenny@wilbyburnett.co.uk)

## PROJECT NEWS



### St Paul's CE Primary School, Walworth Foundation Unit

After almost 12 months of battling we have finally received planning permission for the new £800,000 foundation stage unit extension and new kitchen at St Paul's CE Primary in Walworth. Work is due to start in mid-February with a phased completion by August 2011. The Governors of St Paul's and Southwark Diocese are the Client and the Main Contractor is P R Freddi Ltd.



St Paul's CE Primary School, Whitechapel—Proposed Elevations for the Foundation Unit



- Educational
- Residential
- Commercial
- Sports & Leisure

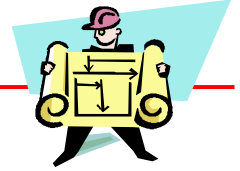
### Mercer and Hughes New Veterinary Surgery

We are pleased to report that we have been appointed by Mercer & Hughes as Architects, Quantity Surveyors and CDM Co-ordinators on their new veterinary surgery in Great Dunmow.

Mercer & Hughes is a long-established local veterinary practice with branches in Saffron Walden, Gt Dunmow and Stansted Mountfitchet. The new facility provides the opportunity for the Gt Dunmow branch to provide an enhanced service both now and into the future.

It is located in an early 1970's factory unit on the Chelmsford Road Industrial Estate. Needless to say, not much will remain of the outmoded fabric (eg asbestos roofing!!) to provide a modern environmentally-friendly facility which will be a great asset for the local community.

## PROJECT NEWS



### St James Hatcham CE Primary School in New Cross

As part of Lewisham Council’s urgent need for additional primary pupil places Built Off Site have been asked to look into the expansion of several primary schools within the Borough. As we have a long standing relationship with St James Hatcham CE Primary School, Built Off Site commissioned W&B to undertake a feasibility study to double the schools capacity to 420 places, 2 form entry.



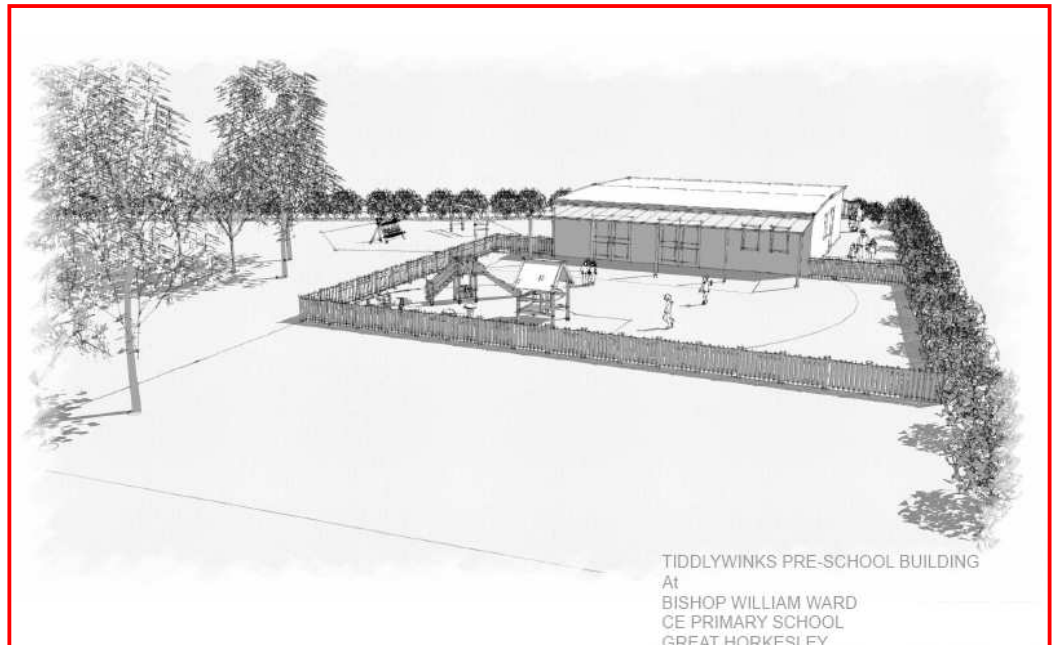
2 Form Entry at St James Hatcham CE Primary School



- Educational
- Residential
- Commercial
- Sports & Leisure

### Tiddlywinks Nursery

Bishop William Ward CE Primary School in Great Horkesley, Colchester are installing a new modular building to form Tiddlywinks Nursery. The main Contractor is Associated Installations Ltd and Elliott Modular are providing the building. Works started at the beginning of February and completion is due for the end of February.



TIDDLYWINKS PRE-SCHOOL BUILDING  
At  
BISHOP WILLIAM WARD  
CE PRIMARY SCHOOL  
GREAT HORKESLEY

Sketch-up of the new Tiddlywinks Nursery

## TRAINING AND CPD SEMINARS

### Lunchtime Seminars



CPD Seminars are arranged by Adam, W&B's CPD Co-ordinator

All seminars start at 1.00pm

#### Meetings for 2011

- 28<sup>th</sup> Feb - Modern Door Controls - Dorma
- 10<sup>th</sup> Mar - Jacksons Perimeter Security

Attendance at CPD seminars now needs to be recorded for the RICS and RIBA. Please make sure you tick the attendance sheet in order to keep the records up to date.

### Cambridge Forum for the Construction Industry

If you would like to attend any CFCI events please contact Trevor for details.

#### Meeting Dates and Visits for Spring Term 2011:

*Meetings held on Mondays at Gillespie Auditorium, Memorial Court, Clare College, Queen's Road, Cambridge, 6.30pm, unless otherwise stated*

- 21<sup>st</sup> Feb - **University of Cambridge Materials Science and Metallurgy Building**
- 22<sup>nd</sup> Mar - Visit to **Emmanuel College Library**
- 31<sup>st</sup> Mar - **The Annual Debate 'Cambridge Deserves Better Buildings'**, *Union Society, Round Church Street*
- 6<sup>th</sup> April - **Cambridge Riverside**, Berkeley Homes redevelopment of former Cambridge Regional College, *junction of Newmarket Road and Elizabeth Way*

*Lifelong Learning*

### RIBA East

#### Forthcoming CPD Seminars for 2011

*Meetings held on Thursdays at SmartLIFE Centre, Cambridge, 1.15-5.00pm, unless otherwise stated*



- 31<sup>st</sup> Mar - **CDM Health & Safety**—Owen Griffith, Total CDM Solutions
- 6<sup>th</sup> Apr - **Building Regulations Update**—Simon Cooper, Butler & Young
- 14<sup>th</sup> Apr - **Practice Management**—Simon Foxell, The Architects Practice
- 5<sup>th</sup> May - **Party Wall Act**—Nicol Stuart Morrow Architects
- 23<sup>rd</sup> June - **Internet Marketing Masterclass**—Fiona Hudson-Kelly
- 7<sup>th</sup> July - **Low Carbon Housing Refurbishment**—Peter Rickaby, Rickaby Thompson Associates
- 15<sup>th</sup> Sept - **Appointments, Agreements and Fees**—Adrian Dobson, RIBA Director of Practice
- 6<sup>th</sup> Oct - **JCT Contracts**—Sarah Lupton, Lupton Stellakis Architects
- 17<sup>th</sup> Nov - **Conservation and Repair of Historic Timber-Famed Buildings**—Richard Harris, Weald & Downland Museum

## SOCIAL EVENTS

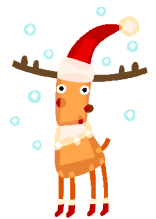
**W&B**

*Join the  
fun*



### Christmas Lunch at the John Barleycorn in Duxford

The Christmas party for 2010 took the form of a very enjoyable lunch at the John Barleycorn pub in Duxford on 17<sup>th</sup> December 2010. The food was excellent and the company of the best, naturally!



In these credit crunch times, as part of a drive to avoid tickets being wasted, a £5 deposit may be required for W&B social occasions. All deposits will go into the drinks kitty for the evening.

### Forthcoming Events

**2011**

To be arranged.

Social Committee

Contact Sean, Stuart or Jenny for details of forthcoming social events